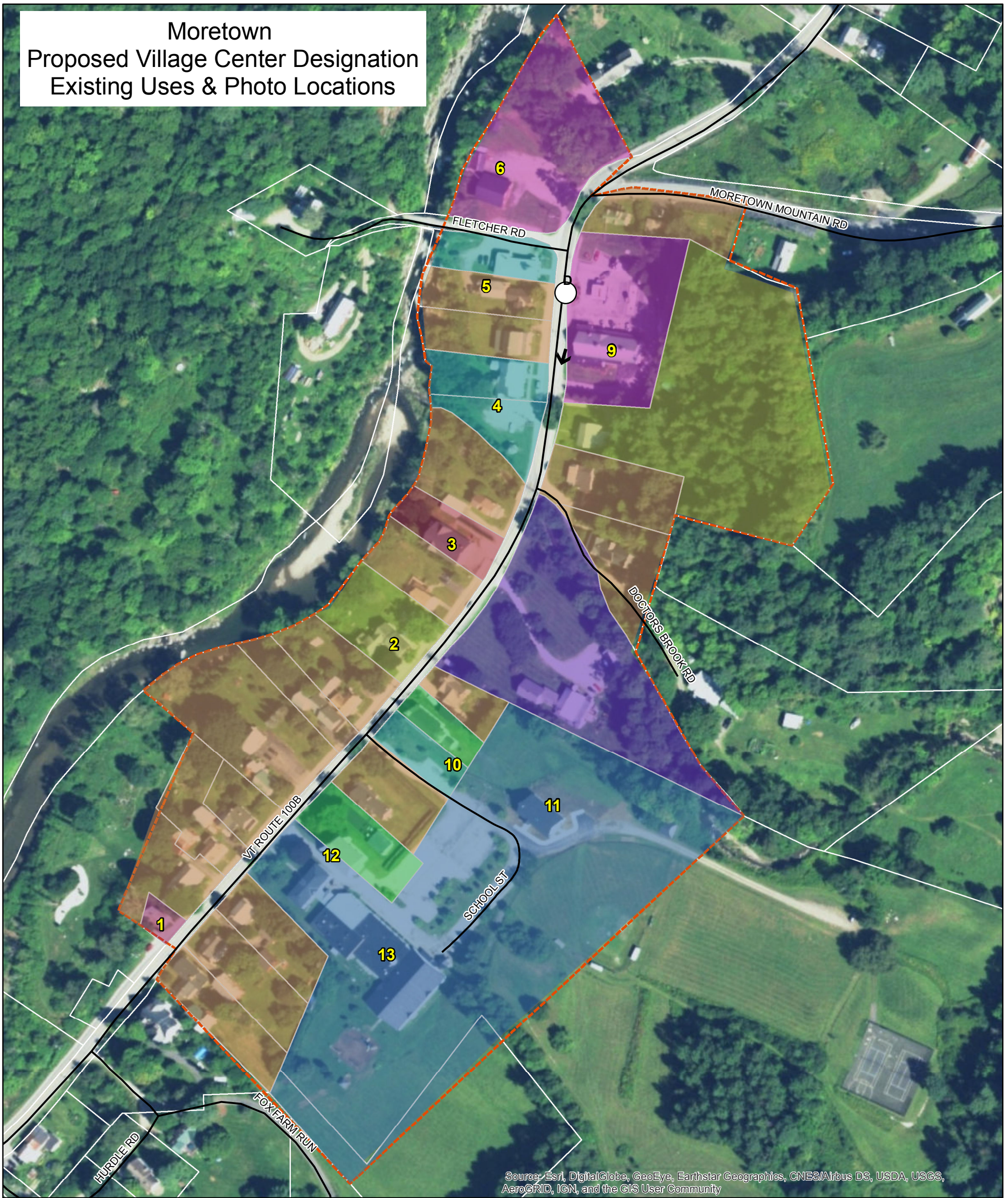


**Moretown
Proposed Village Center Designation
Existing Uses & Photo Locations**



Source: Esri, DigitalGlobe, GeoEye, Earthstar Geographics, CNES/Airbus DS, USDA, USGS, AeroGRID, IGN, and the GIS User Community

- 1. Moretown Memorial Library
- 2. Moretown Real Estate
- 3. Fire Department
- 4. Moretown Post Office
- 5. Moretown Town Hall
- 6. Clapboard Mill
- 7. Fiddleheads Cuisine
- 8. Moretown Town Garage
- 9. Moretown General Store and Deli
- 10. Saint Patricks Church
- 11. Moretown Town Office
- 12. Methodist Church
- 13. Moretown Elementary School

Legend

- Roads
- clip of parcels**
- parcel_use**
- Commercial
- Fire Station
- Government
- House of Worship
- Industrial
- Residential
- School
- library
- lodging
- Village Designation
moretown_parcel1994
- Town_Boundaries

Map Created 6/2/2017 by CVRPC GIS
N:\Towns\Moretown\Projects 2017
Village_Designation_Map.mxd

Sources:
Parcels: Moretown, 1994
Aerial Photos: VT Orthophotos, 2013

Data is only as accurate as the original source materials.
This map is for planning purposes.
This map may contain errors and omissions.

